



# CONTINUING EDUCATION IN TOXICOLOGIC PATHOLOGY REPRODUCTIVE SYSTEM

Third Conference

ORGANIZED BY SOCIETY FOR TOXICOLOGIC PATHOLOGY IN INDIA (STPI)

OCTOBER 29-31, 2010

The Atria Hotel, # 1, Palace Road, Bangalore - 560 001



**AURIGENE**

Accelerating Discovery



citizen industries



**maccine**

**SIEMENS**

**Samitek Instruments**



**Instem™**

Information Solutions For Life

**MPI**  
RESEARCH

Customized.  
Responsive.  
On-Time.™

**BIONEEDS**  
Laboratory Animals & Preclinical Services

**SDS**  
Special Diets Services  
customerservices@toquimen.eu

**IKA®**

**ATNT**

A leading research products company in India  
An ISO 9001:2000 Company

**harlan™**  
Helping you do research better

**Caliber®**  
Technologies Pvt. Ltd.

**intox**

**torrent**

ConneXios

**glenmark**  
A new way for a new world

**LABCON**  
SCIENTIFIC INSTRUMENTS  
PRIVATE LIMITED

**TOWA**

**NUTRILAB®**

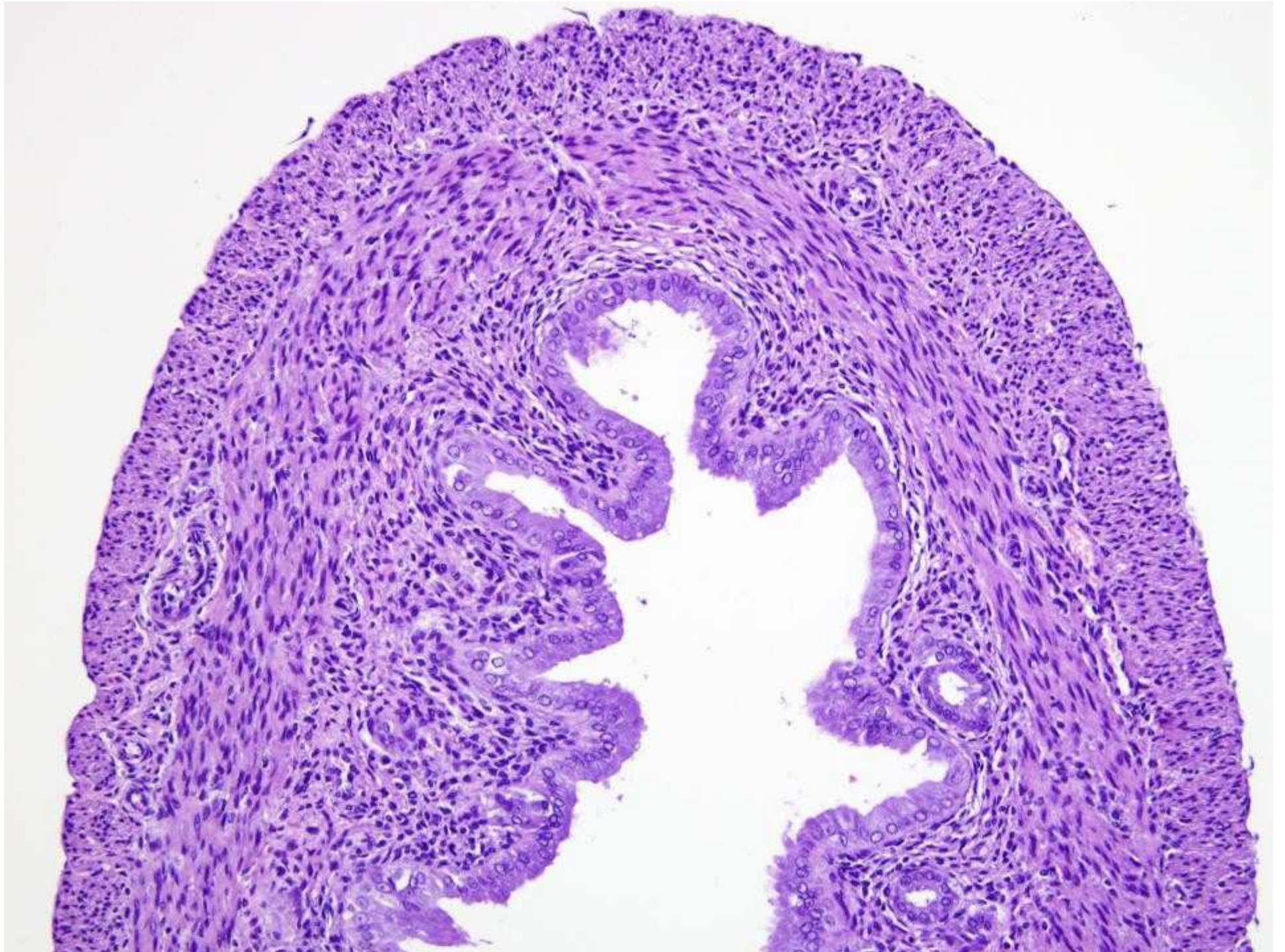
**Vishnu Traders**



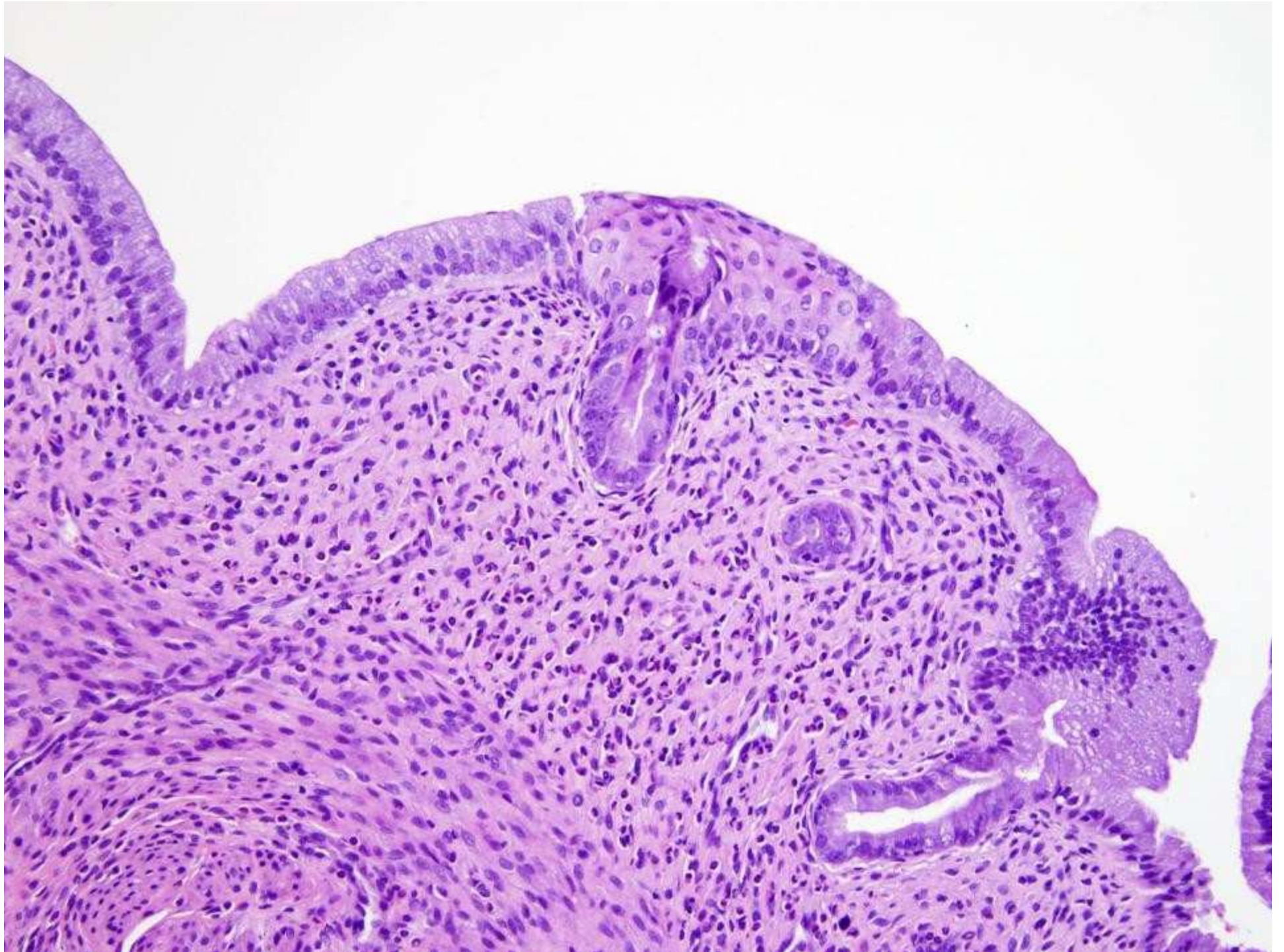
**RCC**  
Linking science to progress



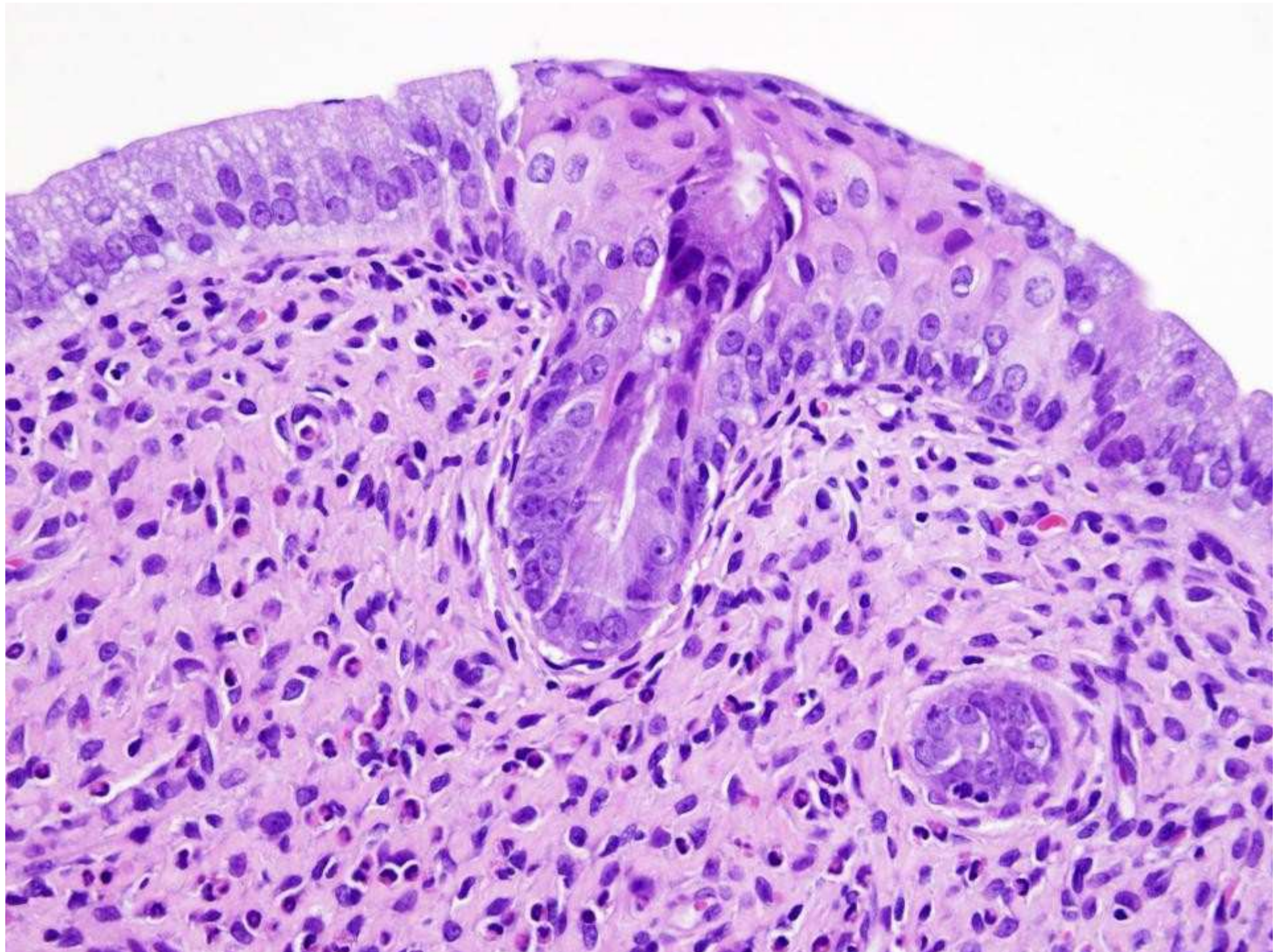




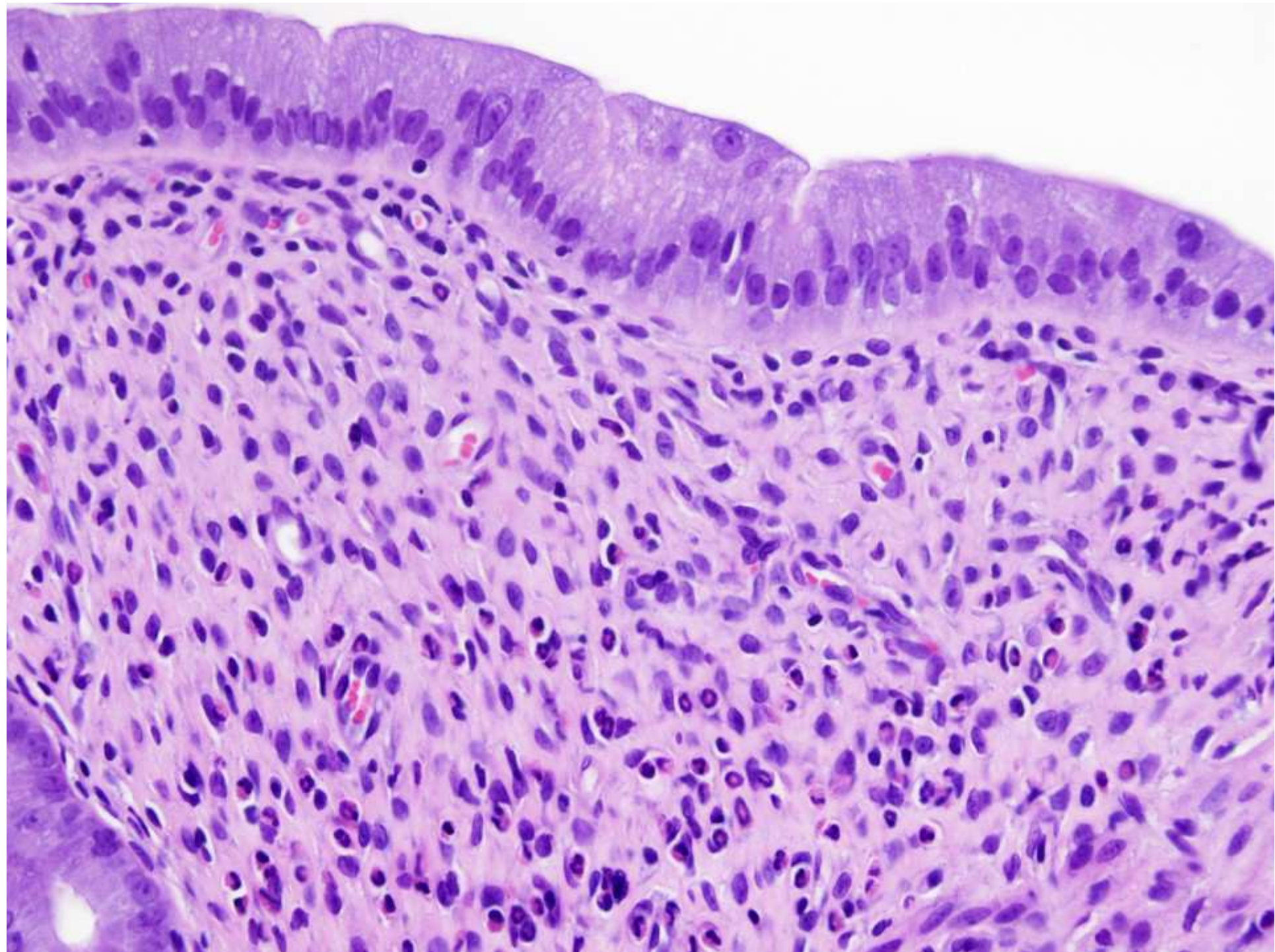




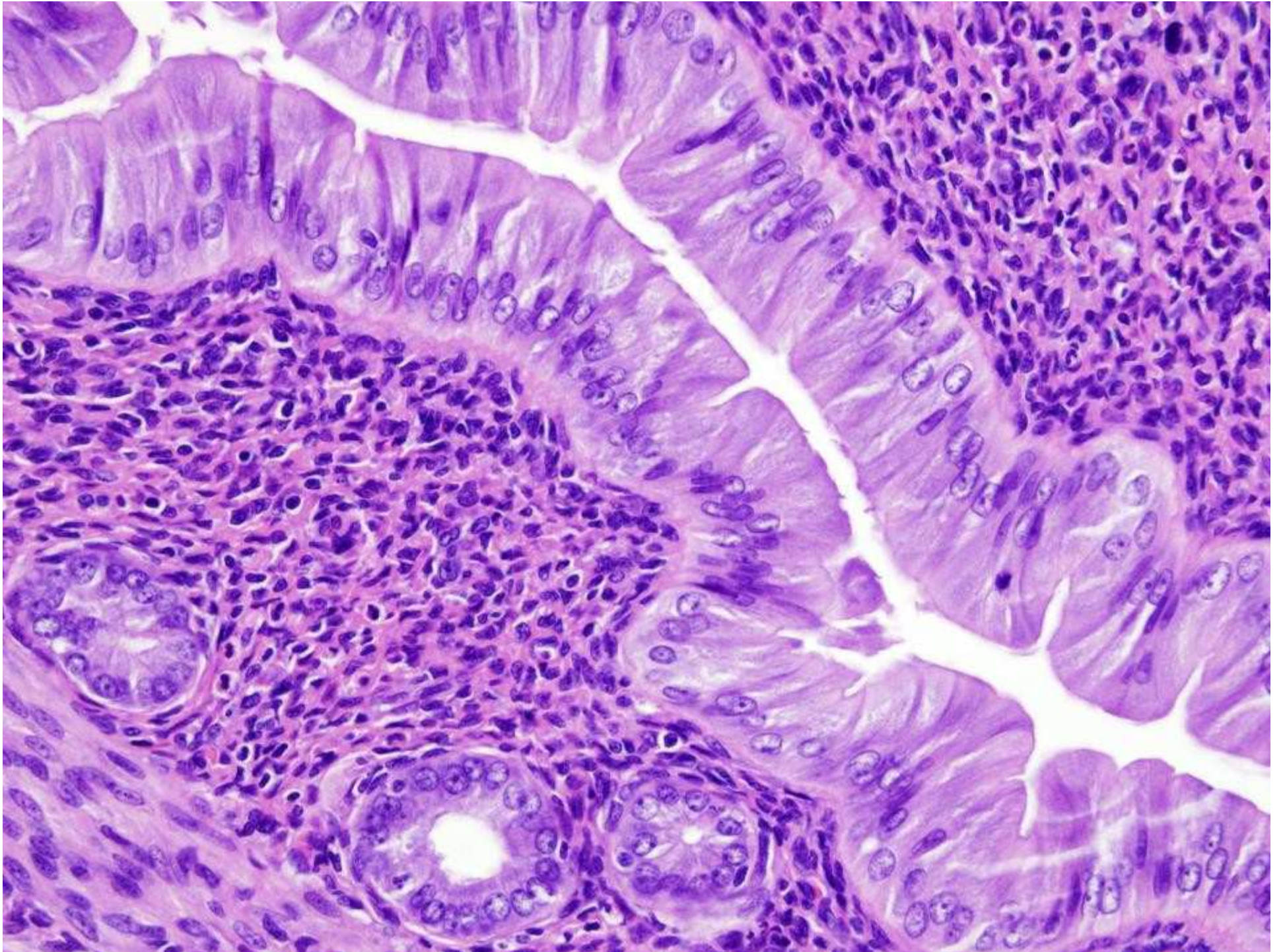




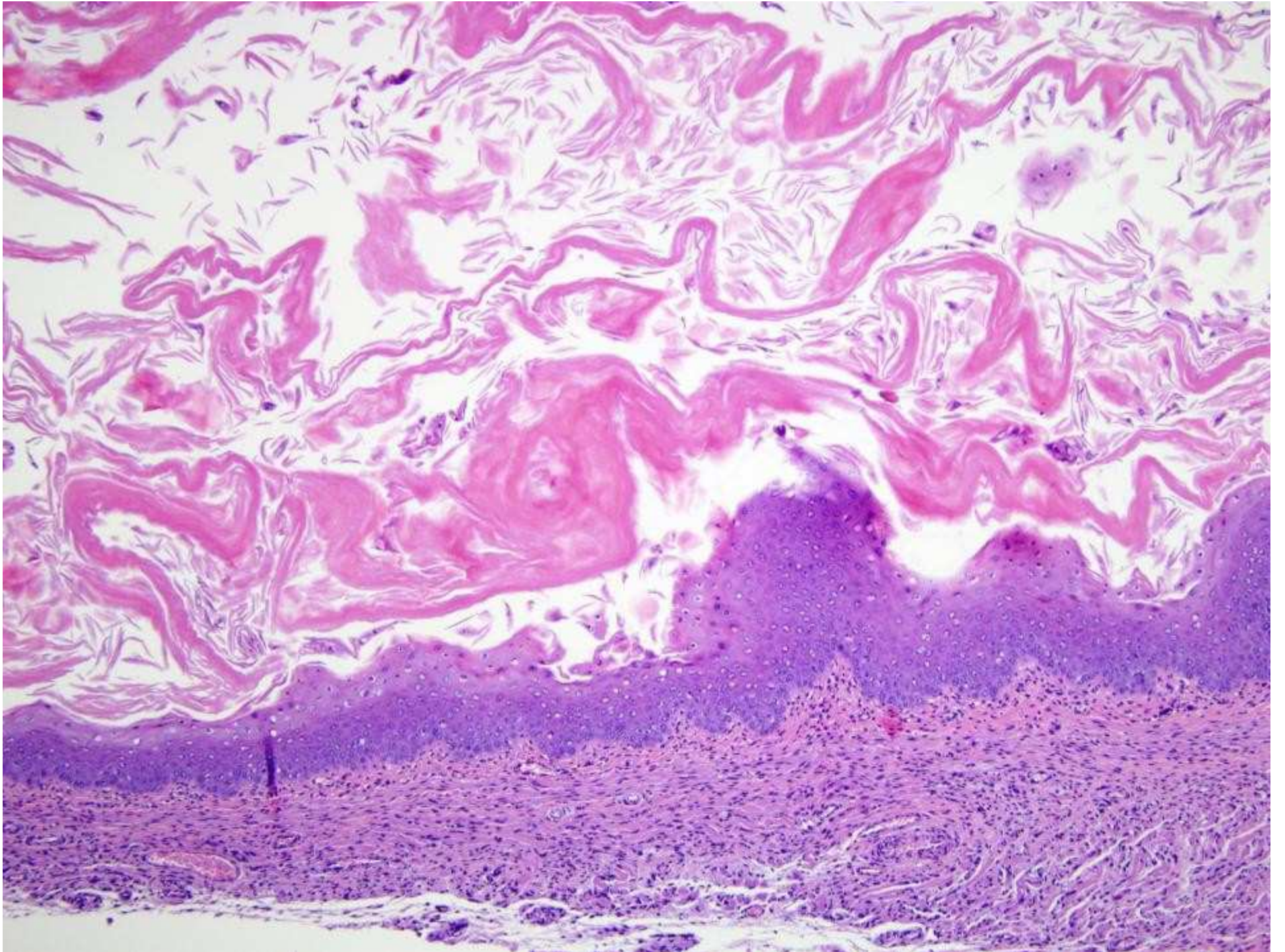








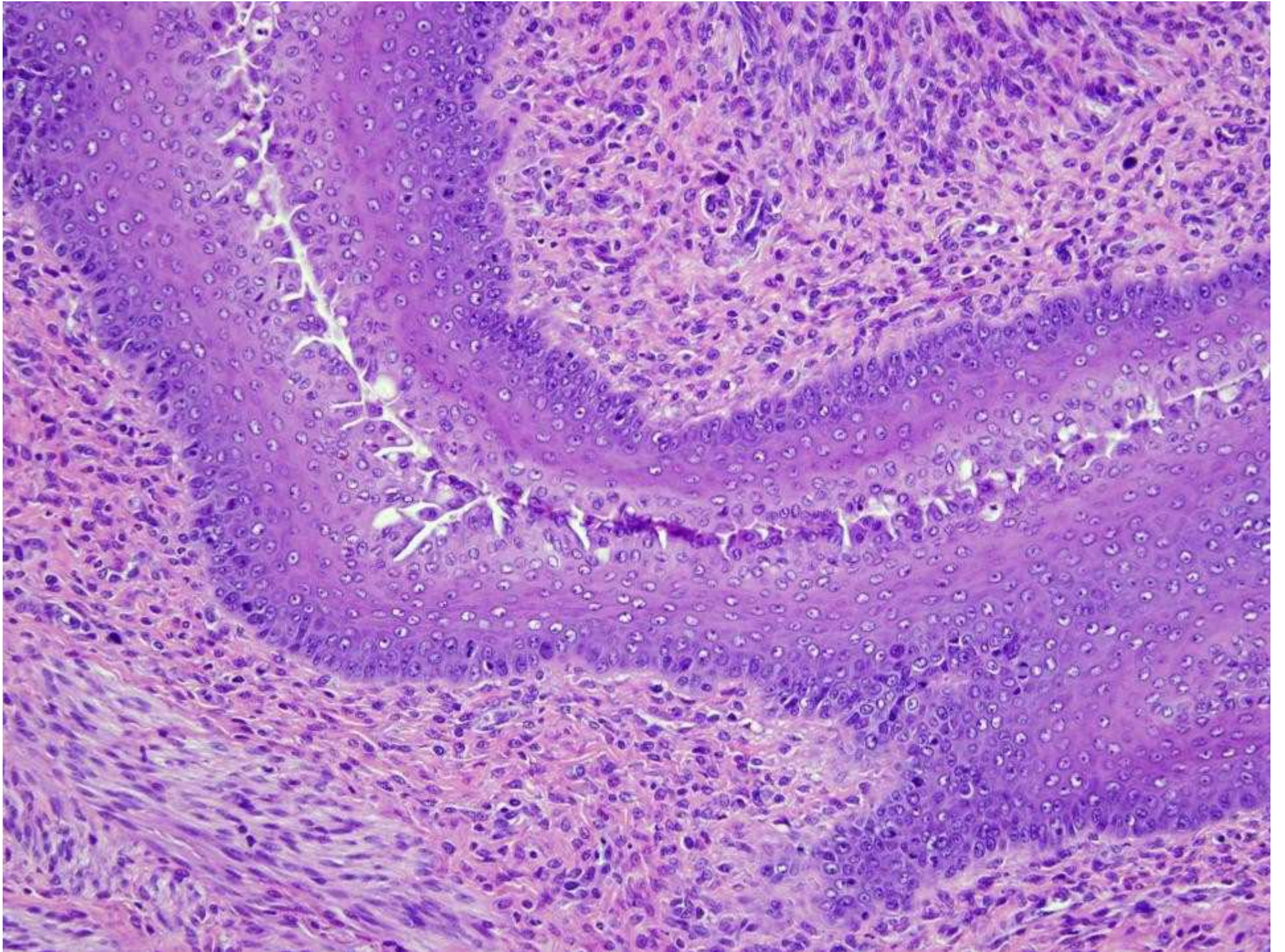














# Changes in Prolactin

- Elevated prolactin
  - Aging animals with prolactinomas
  - Chemicals that lower dopamine
  - Elevated estrogen
- Low prolactin
  - Chemicals that increase dopamine



